

# LVL Formwork Solutions

**ultralam**<sup>TM</sup>  
LVL Formwork Solutions





Modern Lumber Technology Ltd. is one of the biggest Forest owners in the Tver region of North West of Russia with annual logging of 1 500 000 m<sup>3</sup>.

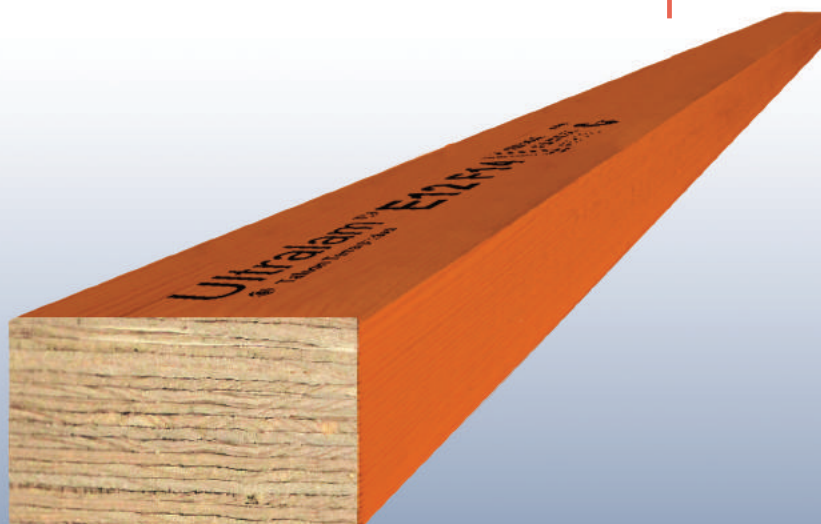
Ultralam LVL formwork beams are produced from the strongest slow-growing softwood lumber of North-West of Russia with Finnish E0 phenolic glue and high-tech American water resistant orange coating is certified and 3rd party audited by Australian SAI Global according to AS/NZS 4357.



The strongest slow-growing softwood  
lumber out of Russian North-West Forests

Ecofriendly with best bonding characteristics  
phenolformaldehyde glue from Finland

The best water resistant coating from USA



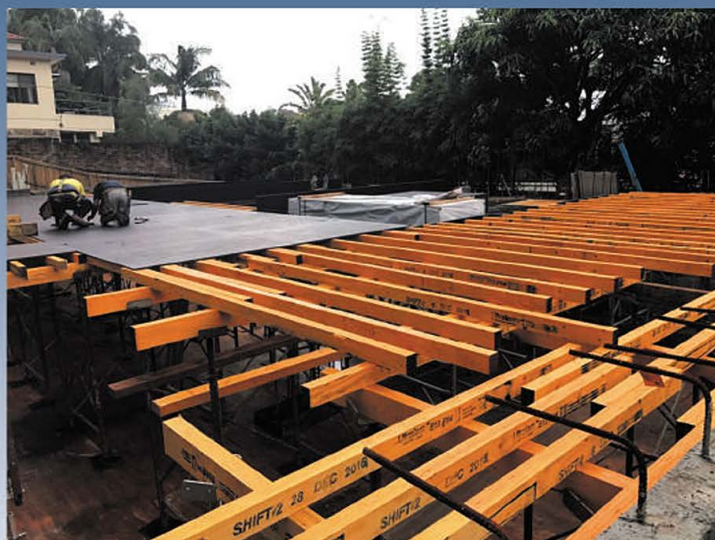
The best wood processing machinery  
from Germany

Strict quality control and 3rd party  
audit from SAI Global, Australia



## SUITABLE APPLICATIONS:

Formwork bearers and Joists  
Soldiers and Walers



## SPECIFICATION:

### Veneer:

Species – Norway Spruce  
and Scotch pine  
Thickness – 3.2mm

### Joints:

face and core scarfed veneers

### Glue:

Phenolformaldehyde

### Bond:

Type A (Marine) AS/NZS 2098  
and AS/2754

### Density:

560 kg/m<sup>3</sup>

### Additional processing:

arrised edges and orange  
water resistant coating

## ULTRALAM LVL FORMWORK BEAMS PRODUCTS

| CROSS SECTION<br>DXB (MM) | MASS KG/M | PIECES<br>PER PACK |
|---------------------------|-----------|--------------------|
| 45X95                     | 2,4       | 11X7 (77)          |
| 63X95                     | 3,35      | 11X5 (55)          |
| 75X130                    | 5,46      | 9X2 (18)           |
| 75X150                    | 6,3       | 8X2 (16)           |



**Density/Tolerances**  
560 kg/m<sup>3</sup>

**Thickness**  
-0/+4 mm

**Length**  
-0/+10 mm

**Width**  
0/+2 mm

The tabular data and standard design in present publication have been prepared in accordance with AS 3610-1995 dd. January 2003, rev.1 and AS 1720.1-2010 Australian Standard for Timber Structures Part 1: Design Methods, dd. August 2015, rev.3



## ULTRALAM E12 CONCRETE FORMWORK JOIST SPAN TABLES

Table 1 below is for Ultralam E12 joists supporting concrete formwork with a deflection criteria of Class III (span/270)

| Concrete slab thickness (mm) | Ultralam E12 Member size (mm) | Ultralam E12 Joist Spacing (mm)      |      |      |      |      |      | Ultralam E12 Joist Spacing (mm)          |      |      |      |      |      |
|------------------------------|-------------------------------|--------------------------------------|------|------|------|------|------|--|------|------|------|------|------|
|                              |                               | 225                                  | 300  | 400  | 450  | 480  | 600  | 225                                      | 300  | 400  | 450  | 480  | 600  |
|                              |                               | Ultralam E12 Maximum Single Span (m) |      |      |      |      |      | Ultralam E12 Maximum Continuous Span (m) |      |      |      |      |      |
| 100                          | 95 x 45                       | 1.95                                 | 1.75 | 1.60 | 1.50 | 1.50 | 1.40 | 2.40                                     | 2.15 | 1.95 | 1.90 | 1.80 | 1.65 |
|                              | 95 x 47                       | 1.95                                 | 1.80 | 1.60 | 1.55 | 1.50 | 1.40 | 2.45                                     | 2.20 | 2.00 | 1.90 | 1.85 | 1.65 |
|                              | 95 x 63                       | 2.15                                 | 1.95 | 1.80 | 1.70 | 1.65 | 1.55 | 2.70                                     | 2.45 | 2.20 | 2.10 | 2.10 | 1.90 |
|                              | 95 x 65                       | 2.20                                 | 2.00 | 1.80 | 1.75 | 1.70 | 1.55 | 2.70                                     | 2.45 | 2.25 | 2.15 | 2.10 | 1.95 |
|                              | 130 x 75                      | 3.15                                 | 2.85 | 2.60 | 2.50 | 2.45 | 2.25 | 3.90                                     | 3.55 | 3.20 | 3.10 | 3.05 | 2.80 |
|                              | 130 x 77                      | 3.20                                 | 2.90 | 2.60 | 2.50 | 2.45 | 2.30 | 3.95                                     | 3.60 | 3.25 | 3.10 | 3.05 | 2.85 |
|                              | 150 x 75                      | 3.65                                 | 3.30 | 3.00 | 2.90 | 2.80 | 2.60 | 4.50                                     | 4.10 | 3.70 | 3.60 | 3.50 | 3.25 |
|                              | 150 x 77                      | 3.70                                 | 3.35 | 3.05 | 2.90 | 2.85 | 2.65 | 4.55                                     | 4.15 | 3.75 | 3.60 | 3.55 | 3.30 |
| 150                          | 95 x 45                       | 1.80                                 | 1.65 | 1.50 | 1.45 | 1.40 | 1.30 | 2.25                                     | 2.05 | 1.85 | 1.75 | 1.70 | 1.50 |
|                              | 95 x 47                       | 1.85                                 | 1.70 | 1.50 | 1.45 | 1.45 | 1.30 | 2.30                                     | 2.10 | 1.90 | 1.80 | 1.75 | 1.55 |
|                              | 95 x 63                       | 2.05                                 | 1.85 | 1.70 | 1.60 | 1.60 | 1.45 | 2.55                                     | 2.30 | 2.10 | 2.00 | 1.95 | 1.80 |
|                              | 95 x 65                       | 2.05                                 | 1.85 | 1.70 | 1.65 | 1.60 | 1.50 | 2.55                                     | 2.35 | 2.10 | 2.05 | 2.00 | 1.85 |
|                              | 130 x 75                      | 3.00                                 | 2.70 | 2.45 | 2.35 | 2.30 | 2.15 | 3.70                                     | 3.35 | 3.05 | 2.95 | 2.85 | 2.65 |
|                              | 130 x 77                      | 3.00                                 | 2.75 | 2.50 | 2.40 | 2.35 | 2.15 | 3.75                                     | 3.40 | 3.05 | 2.95 | 2.90 | 2.70 |
|                              | 150 x 75                      | 3.45                                 | 3.15 | 2.85 | 2.75 | 2.65 | 2.50 | 4.25                                     | 3.90 | 3.50 | 3.40 | 3.30 | 3.05 |
|                              | 150 x 77                      | 3.50                                 | 3.15 | 2.85 | 2.75 | 2.70 | 2.50 | 4.30                                     | 3.90 | 3.55 | 3.40 | 3.35 | 3.10 |
| 200                          | 95 x 45                       | 1.75                                 | 1.55 | 1.45 | 1.35 | 1.35 | 1.25 | 2.15                                     | 1.95 | 1.75 | 1.65 | 1.60 | 1.45 |
|                              | 95 x 47                       | 1.75                                 | 1.60 | 1.45 | 1.40 | 1.35 | 1.25 | 2.20                                     | 2.00 | 1.80 | 1.70 | 1.65 | 1.45 |
|                              | 95 x 63                       | 1.95                                 | 1.75 | 1.60 | 1.55 | 1.50 | 1.40 | 2.40                                     | 2.20 | 2.00 | 1.90 | 1.85 | 1.70 |
|                              | 95 x 65                       | 1.95                                 | 1.80 | 1.60 | 1.55 | 1.50 | 1.40 | 2.45                                     | 2.20 | 2.00 | 1.95 | 1.90 | 1.75 |
|                              | 130 x 75                      | 2.85                                 | 2.60 | 2.35 | 2.25 | 2.20 | 2.05 | 3.50                                     | 3.20 | 2.90 | 2.80 | 2.75 | 2.55 |
|                              | 130 x 77                      | 2.85                                 | 2.60 | 2.35 | 2.25 | 2.20 | 2.05 | 3.55                                     | 3.25 | 2.95 | 2.80 | 2.75 | 2.55 |
|                              | 150 x 75                      | 3.30                                 | 3.00 | 2.70 | 2.60 | 2.55 | 2.35 | 4.05                                     | 3.70 | 3.35 | 3.20 | 3.15 | 2.90 |
|                              | 150 x 77                      | 3.30                                 | 3.00 | 2.75 | 2.60 | 2.55 | 2.40 | 4.10                                     | 3.75 | 3.40 | 3.25 | 3.20 | 2.95 |
| 300                          | 95 x 45                       | 1.60                                 | 1.45 | 1.30 | 1.25 | 1.25 | 1.15 | 2.00                                     | 1.80 | 1.60 | 1.50 | 1.45 | 1.30 |
|                              | 95 x 47                       | 1.65                                 | 1.45 | 1.35 | 1.30 | 1.25 | 1.15 | 2.00                                     | 1.85 | 1.65 | 1.55 | 1.50 | 1.35 |
|                              | 95 x 63                       | 1.80                                 | 1.65 | 1.50 | 1.40 | 1.40 | 1.30 | 2.25                                     | 2.00 | 1.85 | 1.75 | 1.70 | 1.55 |
|                              | 95 x 65                       | 1.80                                 | 1.65 | 1.50 | 1.45 | 1.40 | 1.30 | 2.25                                     | 2.05 | 1.85 | 1.80 | 1.75 | 1.55 |
|                              | 130 x 75                      | 2.60                                 | 2.40 | 2.15 | 2.05 | 2.05 | 1.90 | 3.25                                     | 2.95 | 2.70 | 2.55 | 2.50 | 2.30 |
|                              | 130 x 77                      | 2.65                                 | 2.40 | 2.20 | 2.10 | 2.05 | 1.90 | 3.30                                     | 3.00 | 2.70 | 2.60 | 2.55 | 2.35 |
|                              | 150 x 75                      | 3.05                                 | 2.75 | 2.50 | 2.40 | 2.35 | 2.20 | 3.75                                     | 3.40 | 3.10 | 3.00 | 2.90 | 2.65 |
|                              | 150 x 77                      | 3.05                                 | 2.80 | 2.50 | 2.40 | 2.35 | 2.20 | 3.80                                     | 3.45 | 3.15 | 3.00 | 2.95 | 2.70 |

|      |          |      |      |      |      |      |      |      |      |      |      |      |      |
|------|----------|------|------|------|------|------|------|------|------|------|------|------|------|
| 400  | 95 x 45  | 1.50 | 1.35 | 1.25 | 1.20 | 1.15 | 1.05 | 1.85 | 1.70 | 1.45 | 1.40 | 1.35 | 1.20 |
|      | 95 x 47  | 1.50 | 1.40 | 1.25 | 1.20 | 1.15 | 1.10 | 1.90 | 1.70 | 1.50 | 1.40 | 1.35 | 1.20 |
|      | 95 x 63  | 1.70 | 1.55 | 1.40 | 1.35 | 1.30 | 1.20 | 2.10 | 1.90 | 1.70 | 1.65 | 1.60 | 1.40 |
|      | 95 x 65  | 1.70 | 1.55 | 1.40 | 1.35 | 1.30 | 1.20 | 2.10 | 1.90 | 1.75 | 1.65 | 1.60 | 1.45 |
|      | 130 x 75 | 2.45 | 2.25 | 2.00 | 1.95 | 1.90 | 1.75 | 3.05 | 2.75 | 2.50 | 2.40 | 2.35 | 2.10 |
|      | 130 x 77 | 2.50 | 2.25 | 2.05 | 1.95 | 1.90 | 1.80 | 3.10 | 2.80 | 2.55 | 2.45 | 2.40 | 2.15 |
|      | 150 x 75 | 2.85 | 2.60 | 2.35 | 2.25 | 2.20 | 2.05 | 3.55 | 3.20 | 2.90 | 2.80 | 2.75 | 2.45 |
|      | 150 x 77 | 2.85 | 2.60 | 2.35 | 2.25 | 2.20 | 2.05 | 3.55 | 3.25 | 2.95 | 2.80 | 2.75 | 2.50 |
| 500  | 95 x 45  | 1.40 | 1.30 | 1.15 | 1.10 | 1.10 | 1.00 | 1.75 | 1.60 | 1.35 | 1.30 | 1.25 | 1.10 |
|      | 95 x 47  | 1.45 | 1.30 | 1.20 | 1.15 | 1.10 | 1.05 | 1.80 | 1.60 | 1.40 | 1.30 | 1.25 | 1.15 |
|      | 95 x 63  | 1.60 | 1.45 | 1.30 | 1.25 | 1.25 | 1.15 | 2.00 | 1.80 | 1.60 | 1.50 | 1.45 | 1.30 |
|      | 95 x 65  | 1.60 | 1.45 | 1.30 | 1.25 | 1.25 | 1.15 | 2.00 | 1.80 | 1.65 | 1.55 | 1.50 | 1.35 |
|      | 130 x 75 | 2.35 | 2.10 | 1.90 | 1.85 | 1.80 | 1.65 | 2.90 | 2.60 | 2.40 | 2.30 | 2.20 | 2.00 |
|      | 130 x 77 | 2.35 | 2.15 | 1.95 | 1.85 | 1.80 | 1.70 | 2.90 | 2.65 | 2.40 | 2.30 | 2.25 | 2.00 |
|      | 150 x 75 | 2.70 | 2.45 | 2.20 | 2.15 | 2.10 | 1.95 | 3.35 | 3.05 | 2.75 | 2.65 | 2.55 | 2.30 |
|      | 150 x 77 | 2.70 | 2.45 | 2.25 | 2.15 | 2.10 | 1.95 | 3.35 | 3.05 | 2.80 | 2.65 | 2.60 | 2.30 |
| 600  | 95 x 45  | 1.35 | 1.25 | 1.10 | 1.05 | 1.05 | 0.95 | 1.70 | 1.50 | 1.30 | 1.20 | 1.15 | 1.05 |
|      | 95 x 47  | 1.35 | 1.25 | 1.15 | 1.10 | 1.05 | 1.00 | 1.70 | 1.50 | 1.30 | 1.25 | 1.20 | 1.05 |
|      | 95 x 63  | 1.50 | 1.40 | 1.25 | 1.20 | 1.15 | 1.10 | 1.90 | 1.70 | 1.50 | 1.45 | 1.40 | 1.25 |
|      | 95 x 65  | 1.55 | 1.40 | 1.25 | 1.20 | 1.20 | 1.10 | 1.90 | 1.75 | 1.55 | 1.45 | 1.40 | 1.25 |
|      | 130 x 75 | 2.20 | 2.00 | 1.85 | 1.75 | 1.70 | 1.60 | 2.75 | 2.50 | 2.25 | 2.15 | 2.10 | 1.85 |
|      | 130 x 77 | 2.25 | 2.05 | 1.85 | 1.75 | 1.75 | 1.60 | 2.80 | 2.50 | 2.30 | 2.20 | 2.10 | 1.90 |
|      | 150 x 75 | 2.55 | 2.35 | 2.10 | 2.05 | 2.00 | 1.85 | 3.20 | 2.90 | 2.65 | 2.50 | 2.40 | 2.15 |
|      | 150 x 77 | 2.60 | 2.35 | 2.15 | 2.05 | 2.00 | 1.85 | 3.20 | 2.90 | 2.65 | 2.50 | 2.45 | 2.15 |
| 1000 | 95 x 45  | 1.15 | 1.05 | 0.95 | 0.90 | 0.90 | 0.85 | 1.40 | 1.20 | 1.05 | 1.00 | 0.95 | 0.85 |
|      | 95 x 47  | 1.20 | 1.10 | 1.00 | 0.95 | 0.90 | 0.85 | 1.45 | 1.25 | 1.10 | 1.00 | 1.00 | 0.85 |
|      | 95 x 63  | 1.30 | 1.20 | 1.10 | 1.05 | 1.00 | 0.95 | 1.65 | 1.45 | 1.25 | 1.20 | 1.15 | 1.00 |
|      | 95 x 65  | 1.35 | 1.20 | 1.10 | 1.05 | 1.05 | 0.95 | 1.65 | 1.45 | 1.25 | 1.20 | 1.15 | 1.05 |
|      | 130 x 75 | 1.95 | 1.75 | 1.60 | 1.50 | 1.50 | 1.40 | 2.40 | 2.15 | 1.90 | 1.75 | 1.70 | 1.55 |
|      | 130 x 77 | 1.95 | 1.75 | 1.60 | 1.55 | 1.50 | 1.40 | 2.40 | 2.20 | 1.90 | 1.80 | 1.75 | 1.55 |
|      | 150 x 75 | 2.25 | 2.05 | 1.85 | 1.75 | 1.75 | 1.60 | 2.75 | 2.50 | 2.15 | 2.05 | 2.00 | 1.75 |
|      | 150 x 77 | 2.25 | 2.05 | 1.85 | 1.80 | 1.75 | 1.60 | 2.80 | 2.55 | 2.20 | 2.05 | 2.00 | 1.80 |



## ULTRALAM E12 CONCRETE FORMWORK BEARER SPAN TABLES

Table 2 below is for Ultralam E12 bearers supporting concrete formwork with a deflection criteria of Class III (span/270)

| Concrete slab thickness (mm) | Ultralam E12 Member size (mm) | Ultralam E12 Bearer Spacing (mm)     |      |      |      |      |      | Ultralam E12 Bearer Spacing (mm)         |      |      |      |      |      |
|------------------------------|-------------------------------|--------------------------------------|------|------|------|------|------|--|------|------|------|------|------|
|                              |                               | 900                                  | 1200 | 1500 | 1800 | 2100 | 2400 | 900                                      | 1200 | 1500 | 1800 | 2100 | 2400 |
|                              |                               | Ultralam E12 Maximum Single Span (m) |      |      |      |      |      | Ultralam E12 Maximum Continuous Span (m) |      |      |      |      |      |
| 100                          | 95 x 45                       | 1.20                                 | 1.10 | 1.00 | 0.95 | 0.85 | 0.80 | 1.30                                     | 1.15 | 1.00 | 0.95 | 0.85 | 0.75 |
|                              | 95 x 47                       | 1.20                                 | 1.10 | 1.00 | 0.95 | 0.90 | 0.80 | 1.35                                     | 1.15 | 1.05 | 0.95 | 0.85 | 0.80 |
|                              | 95 x 63                       | 1.35                                 | 1.20 | 1.15 | 1.05 | 1.00 | 0.95 | 1.55                                     | 1.35 | 1.20 | 1.10 | 1.00 | 0.95 |
|                              | 95 x 65                       | 1.35                                 | 1.25 | 1.15 | 1.05 | 1.00 | 0.95 | 1.60                                     | 1.40 | 1.25 | 1.10 | 1.05 | 0.95 |
|                              | 130 x 75                      | 1.95                                 | 1.80 | 1.65 | 1.55 | 1.50 | 1.40 | 2.35                                     | 2.05 | 1.80 | 1.65 | 1.55 | 1.45 |
|                              | 130 x 77                      | 2.00                                 | 1.80 | 1.65 | 1.55 | 1.50 | 1.40 | 2.40                                     | 2.05 | 1.85 | 1.70 | 1.55 | 1.45 |
|                              | 150 x 75                      | 2.30                                 | 2.05 | 1.90 | 1.80 | 1.70 | 1.65 | 2.70                                     | 2.35 | 2.10 | 1.90 | 1.75 | 1.65 |
|                              | 150 x 77                      | 2.30                                 | 2.10 | 1.95 | 1.80 | 1.75 | 1.65 | 2.75                                     | 2.40 | 2.15 | 1.95 | 1.80 | 1.70 |
| 150                          | 95 x 45                       | 1.15                                 | 1.05 | 0.95 | 0.85 | 0.80 | 0.75 | 1.25                                     | 1.05 | 0.95 | 0.85 | 0.75 | 0.70 |
|                              | 95 x 47                       | 1.15                                 | 1.05 | 0.95 | 0.90 | 0.80 | 0.75 | 1.25                                     | 1.10 | 0.95 | 0.90 | 0.80 | 0.70 |
|                              | 95 x 63                       | 1.25                                 | 1.15 | 1.05 | 1.00 | 0.95 | 0.90 | 1.45                                     | 1.25 | 1.15 | 1.05 | 0.95 | 0.90 |
|                              | 95 x 65                       | 1.30                                 | 1.15 | 1.10 | 1.00 | 0.95 | 0.90 | 1.50                                     | 1.30 | 1.15 | 1.05 | 0.95 | 0.90 |
|                              | 130 x 75                      | 1.85                                 | 1.70 | 1.55 | 1.45 | 1.40 | 1.35 | 2.20                                     | 1.90 | 1.70 | 1.55 | 1.45 | 1.35 |
|                              | 130 x 77                      | 1.90                                 | 1.70 | 1.60 | 1.50 | 1.40 | 1.35 | 2.25                                     | 1.95 | 1.75 | 1.55 | 1.45 | 1.35 |
|                              | 150 x 75                      | 2.15                                 | 1.95 | 1.80 | 1.70 | 1.60 | 1.55 | 2.55                                     | 2.20 | 1.95 | 1.80 | 1.65 | 1.55 |
|                              | 150 x 77                      | 2.20                                 | 1.95 | 1.85 | 1.70 | 1.65 | 1.55 | 2.60                                     | 2.25 | 2.00 | 1.80 | 1.70 | 1.55 |
| 200                          | 95 x 45                       | 1.10                                 | 1.00 | 0.90 | 0.80 | 0.75 | 0.70 | 1.15                                     | 1.00 | 0.90 | 0.80 | 0.70 | 0.65 |
|                              | 95 x 47                       | 1.10                                 | 1.00 | 0.90 | 0.85 | 0.75 | 0.70 | 1.20                                     | 1.05 | 0.90 | 0.80 | 0.75 | 0.65 |
|                              | 95 x 63                       | 1.20                                 | 1.10 | 1.00 | 0.95 | 0.90 | 0.85 | 1.40                                     | 1.20 | 1.05 | 0.95 | 0.90 | 0.80 |
|                              | 95 x 65                       | 1.20                                 | 1.10 | 1.05 | 0.95 | 0.90 | 0.85 | 1.40                                     | 1.20 | 1.10 | 1.00 | 0.90 | 0.85 |
|                              | 130 x 75                      | 1.80                                 | 1.60 | 1.50 | 1.40 | 1.35 | 1.25 | 2.10                                     | 1.80 | 1.60 | 1.45 | 1.35 | 1.25 |
|                              | 130 x 77                      | 1.80                                 | 1.60 | 1.50 | 1.40 | 1.35 | 1.30 | 2.10                                     | 1.80 | 1.65 | 1.50 | 1.35 | 1.30 |
|                              | 150 x 75                      | 2.05                                 | 1.85 | 1.75 | 1.60 | 1.55 | 1.45 | 2.40                                     | 2.10 | 1.85 | 1.70 | 1.55 | 1.45 |
|                              | 150 x 77                      | 2.05                                 | 1.90 | 1.75 | 1.65 | 1.55 | 1.50 | 2.45                                     | 2.10 | 1.90 | 1.70 | 1.60 | 1.50 |
| 300                          | 95 x 45                       | 1.00                                 | 0.90 | 0.80 | 0.75 | 0.70 | 0.65 | 1.05                                     | 0.90 | 0.80 | 0.70 | 0.60 | 0.55 |
|                              | 95 x 47                       | 1.00                                 | 0.90 | 0.85 | 0.75 | 0.70 | 0.65 | 1.10                                     | 0.95 | 0.80 | 0.70 | 0.65 | 0.60 |
|                              | 95 x 63                       | 1.10                                 | 1.00 | 0.95 | 0.90 | 0.80 | 0.75 | 1.25                                     | 1.10 | 0.95 | 0.85 | 0.80 | 0.70 |
|                              | 95 x 65                       | 1.15                                 | 1.00 | 0.95 | 0.90 | 0.80 | 0.75 | 1.25                                     | 1.10 | 1.00 | 0.90 | 0.80 | 0.70 |
|                              | 130 x 75                      | 1.65                                 | 1.50 | 1.35 | 1.30 | 1.20 | 1.15 | 1.90                                     | 1.65 | 1.45 | 1.30 | 1.20 | 1.10 |
|                              | 130 x 77                      | 1.65                                 | 1.50 | 1.40 | 1.30 | 1.25 | 1.15 | 1.90                                     | 1.65 | 1.45 | 1.35 | 1.25 | 1.15 |
|                              | 150 x 75                      | 1.90                                 | 1.70 | 1.60 | 1.50 | 1.40 | 1.30 | 2.15                                     | 1.90 | 1.70 | 1.55 | 1.40 | 1.30 |
|                              | 150 x 77                      | 1.90                                 | 1.75 | 1.60 | 1.50 | 1.45 | 1.35 | 2.20                                     | 1.90 | 1.70 | 1.55 | 1.45 | 1.30 |





|      |          |      |      |      |      |      |      |      |      |      |      |      |      |
|------|----------|------|------|------|------|------|------|------|------|------|------|------|------|
| 400  | 95 x 45  | 0.95 | 0.85 | 0.75 | 0.70 | 0.65 | 0.60 | 0.95 | 0.80 | 0.70 | 0.60 | 0.55 | 0.50 |
|      | 95 x 47  | 0.95 | 0.85 | 0.75 | 0.70 | 0.65 | 0.60 | 1.00 | 0.85 | 0.70 | 0.65 | 0.55 | 0.50 |
|      | 95 x 63  | 1.05 | 0.95 | 0.85 | 0.80 | 0.75 | 0.70 | 1.15 | 1.00 | 0.90 | 0.75 | 0.70 | 0.65 |
|      | 95 x 65  | 1.05 | 0.95 | 0.90 | 0.80 | 0.75 | 0.70 | 1.15 | 1.00 | 0.90 | 0.80 | 0.70 | 0.65 |
|      | 130 x 75 | 1.55 | 1.40 | 1.30 | 1.20 | 1.10 | 1.05 | 1.75 | 1.50 | 1.35 | 1.20 | 1.10 | 1.00 |
|      | 130 x 77 | 1.55 | 1.40 | 1.30 | 1.20 | 1.15 | 1.05 | 1.75 | 1.50 | 1.35 | 1.25 | 1.10 | 1.00 |
|      | 150 x 75 | 1.80 | 1.60 | 1.50 | 1.40 | 1.30 | 1.20 | 2.00 | 1.75 | 1.55 | 1.40 | 1.25 | 1.15 |
|      | 150 x 77 | 1.80 | 1.65 | 1.50 | 1.40 | 1.30 | 1.25 | 2.05 | 1.75 | 1.55 | 1.45 | 1.30 | 1.15 |
| 500  | 95 x 45  | 0.90 | 0.80 | 0.70 | 0.65 | 0.60 | 0.55 | 0.90 | 0.75 | 0.65 | 0.55 | 0.50 | 0.45 |
|      | 95 x 47  | 0.90 | 0.80 | 0.70 | 0.65 | 0.60 | 0.55 | 0.90 | 0.75 | 0.65 | 0.55 | 0.50 | 0.50 |
|      | 95 x 63  | 1.00 | 0.90 | 0.80 | 0.75 | 0.70 | 0.65 | 1.05 | 0.90 | 0.80 | 0.70 | 0.65 | 0.55 |
|      | 95 x 65  | 1.00 | 0.90 | 0.85 | 0.75 | 0.70 | 0.65 | 1.10 | 0.95 | 0.80 | 0.70 | 0.65 | 0.60 |
|      | 130 x 75 | 1.45 | 1.30 | 1.20 | 1.15 | 1.05 | 1.00 | 1.60 | 1.40 | 1.25 | 1.10 | 1.00 | 0.90 |
|      | 130 x 77 | 1.45 | 1.35 | 1.25 | 1.15 | 1.05 | 1.00 | 1.65 | 1.40 | 1.25 | 1.10 | 1.00 | 0.90 |
|      | 150 x 75 | 1.70 | 1.50 | 1.40 | 1.30 | 1.20 | 1.15 | 1.85 | 1.60 | 1.45 | 1.25 | 1.15 | 1.05 |
|      | 150 x 77 | 1.70 | 1.55 | 1.45 | 1.35 | 1.25 | 1.15 | 1.90 | 1.65 | 1.45 | 1.30 | 1.15 | 1.05 |
| 600  | 95 x 45  | 0.85 | 0.75 | 0.65 | 0.60 | 0.55 | 0.50 | 0.85 | 0.65 | 0.60 | 0.50 | 0.45 | 0.45 |
|      | 95 x 47  | 0.85 | 0.75 | 0.65 | 0.60 | 0.55 | 0.50 | 0.85 | 0.70 | 0.60 | 0.55 | 0.50 | 0.45 |
|      | 95 x 63  | 0.95 | 0.85 | 0.75 | 0.70 | 0.65 | 0.60 | 1.00 | 0.85 | 0.75 | 0.65 | 0.60 | 0.55 |
|      | 95 x 65  | 0.95 | 0.85 | 0.80 | 0.70 | 0.65 | 0.60 | 1.00 | 0.90 | 0.75 | 0.65 | 0.60 | 0.55 |
|      | 130 x 75 | 1.40 | 1.25 | 1.15 | 1.05 | 1.00 | 0.90 | 1.50 | 1.30 | 1.15 | 1.00 | 0.90 | 0.80 |
|      | 130 x 77 | 1.40 | 1.25 | 1.15 | 1.10 | 1.00 | 0.95 | 1.55 | 1.30 | 1.15 | 1.00 | 0.90 | 0.85 |
|      | 150 x 75 | 1.60 | 1.45 | 1.35 | 1.25 | 1.15 | 1.05 | 1.75 | 1.50 | 1.30 | 1.15 | 1.05 | 0.95 |
|      | 150 x 77 | 1.60 | 1.45 | 1.35 | 1.25 | 1.15 | 1.05 | 1.75 | 1.55 | 1.35 | 1.20 | 1.05 | 0.95 |
| 1000 | 95 x 45  | 0.70 | 0.60 | 0.55 | 0.50 | 0.45 | 0.40 | 0.65 | 0.50 | 0.45 | 0.40 | 0.40 | 0.35 |
|      | 95 x 47  | 0.70 | 0.60 | 0.55 | 0.50 | 0.45 | 0.40 | 0.65 | 0.55 | 0.45 | 0.40 | 0.40 | 0.35 |
|      | 95 x 63  | 0.80 | 0.70 | 0.65 | 0.60 | 0.55 | 0.50 | 0.80 | 0.65 | 0.55 | 0.50 | 0.45 | 0.45 |
|      | 95 x 65  | 0.80 | 0.70 | 0.65 | 0.60 | 0.55 | 0.50 | 0.80 | 0.65 | 0.55 | 0.50 | 0.45 | 0.45 |
|      | 130 x 75 | 1.20 | 1.05 | 0.95 | 0.85 | 0.80 | 0.75 | 1.25 | 1.00 | 0.85 | 0.75 | 0.70 | 0.65 |
|      | 130 x 77 | 1.20 | 1.10 | 0.95 | 0.90 | 0.80 | 0.75 | 1.25 | 1.05 | 0.90 | 0.80 | 0.70 | 0.65 |
|      | 150 x 75 | 1.40 | 1.25 | 1.10 | 1.00 | 0.95 | 0.85 | 1.45 | 1.15 | 1.00 | 0.90 | 0.80 | 0.75 |
|      | 150 x 77 | 1.40 | 1.25 | 1.10 | 1.00 | 0.95 | 0.90 | 1.45 | 1.20 | 1.00 | 0.90 | 0.85 | 0.75 |

#### Notes:

1. Member deflections are limited to span/270 (Class III formwork limit in accordance with AS 3610.1-2010). However, this does not guarantee compliance with Class III criteria since other components outside the scope of this table contribute to the form face deflection.
2. Spans allow for a stacked materials loading of 4 kPa.
3. Members are assumed to have a moisture content <15%. The span table shall not be relied upon where members are used in a wet condition (moisture content >15%). For moisture contents > 15% designers must incorporate the deformation factor (j<sub>2</sub>) from AS1720.1-2010.
4. Interpolation of spans for intermediate concrete thicknesses is permitted. Extrapolation is not permitted.
5. Continuous span members includes 2 or more equally spaced spans with uniformly distributed loading.



## BUILD SAFELY

MLT Ltd. are committed to work safely and want to remind you to do the same. We encourage you to follow recommendations regarding:



Personal protective equipment for hands, feet, head and eyes



Fall protection



Product performance specification

## STORAGE AND HANDLING RECOMMENDATIONS



Keep LVL formwork beams in dry and well ventilated area



Re-seal cut edges with acrylic paint



Wet members and sheets should have spacers between layers to allow to dry out

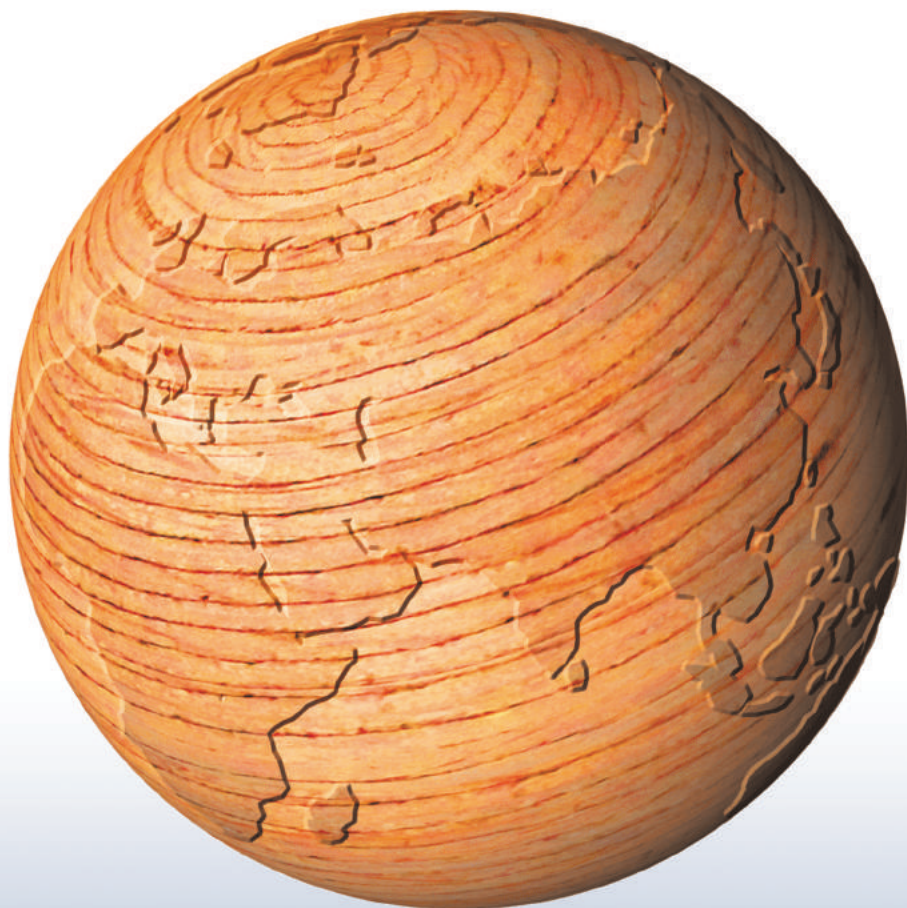


Do not use LVL formwork beams over spans greater than those recommended in present brochure





# ULTRALAM LVL FORMWORK SOLUTIONS



---

**Modern Lumber Technology Ltd. (MLT Ltd.)**  
Head office

14-A, Bolshaya Morskaya Str.,  
191186, Saint-Petersburg, Russia

**Phone Int'Sales** +7 812 612 0899

**Ph/Fax** +7 812 571 6164

**E-mail** [sales@mltlvl.com](mailto:sales@mltlvl.com)  
[www.ultralam.com](http://www.ultralam.com)

---