

ultralamTM 

*Additional Processing
Facility*

In the beginning of 2016 MLT Ltd. commissioned LVL Ultralam world class additional processing facility.

Planing and Pressing Line

REX BIGMASTER Planer

Made in Germany



Finished billet

	Min (mm)	Max (mm)
Height	20	300
Width	100	600
Lenght	6000	18000



- 4 sided billet planing (calibration) with minimum planing thickness tolerance +/- 0.3 mm.
- 4 sided billet chamfering (from 5 to 10 mm) along the entire billet length.
- Top and bottom profiling along the entire billet length up to the depth of 10 mm.
- Top and/or bottom billet surface finishing. Customized profile shape.

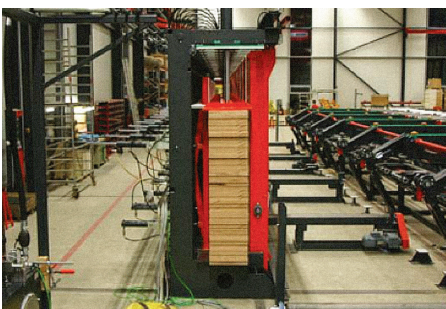
Example:

LVL Planing and profiling



MINDA Vertical Press for Whole Section Timber Pressing

Made in Germany



The recommended dimensions of glued structures are within the range of:

	Min (mm)	Max (mm)
Thickness	100	2000
Width	100	600
Lenght	8000	18000



- Beams are glued both from full and jointed lamellae

Example:

Cold pressed beams



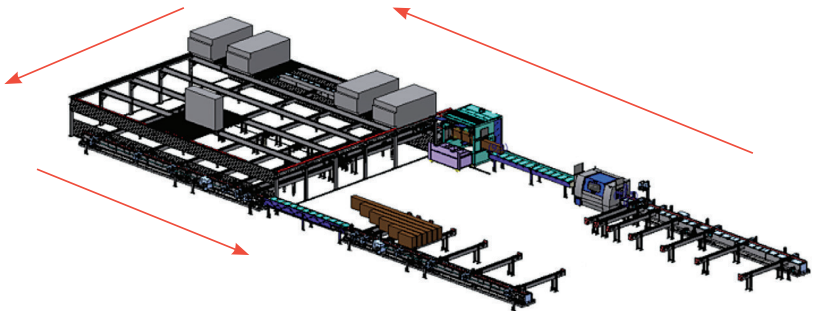
Painting and Drying Line

Sarmax Billet Treatment And Finishing Line

Made in Italy

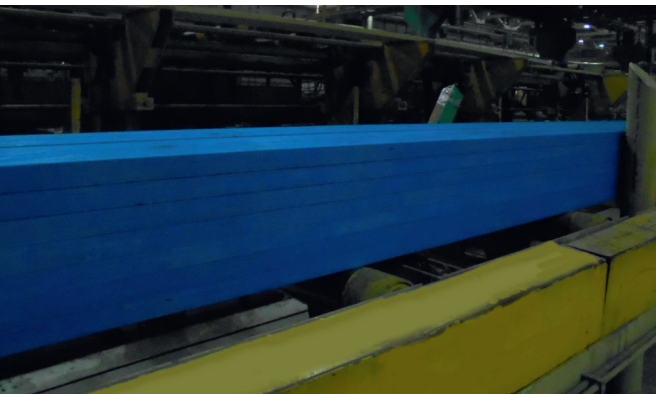
Component lengths:
from 1500 mm up to 13000 mm

Preservative treatment (preservatives, sealants, fireproof etc.) and painting of wooden components with various types of water based paints followed by drying in a kiln.



Component dimensions suitable for the machine parameters:

	Min (mm)	Max (mm)
Height	10	400
Width	100	400
Lenght	1500	13000



Ultralam Prefabricated Houses Production Line

Made in Germany

Manufacturing of thermally and vapor insulated wall, socle, roof and flooring panels for prefabricated houses (house kits) with maximum degree of internal and external finishing.

Wall panels dimensions:

Dimensions depend on design calculations and customer requirements.

	Min (mm)	Max (mm)
Height		3300
Width		12000
Thickness		400



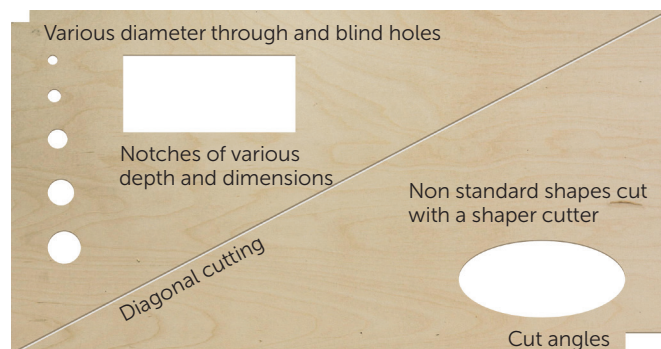
The versatile Optimat carpentry table

(wall panels assembly line) enables to cut profiles of various degree of complexity (openings, diagonal cuts, notches, slits) in whole section billets (boards).



Example:

Panels arrangement in an individual residential house with the area of 75 m², 200 mm thick external walls and 150 mm thick internal partition walls.



Assembly Area

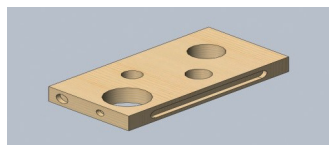
Assembly of frame trusses, floor joists, columns with stud and/or screw joints. Manufacturing of complex structures, trusses, frames and other decorative elements.



Beam processing center WBZ 160/13

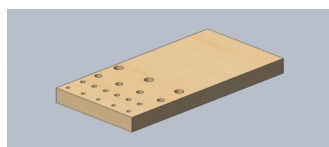
Workpiece	Min (mm)	Max (mm)
Lenght	1200	13300
Thickness	20	200
Width	50	400

Type of Processing:

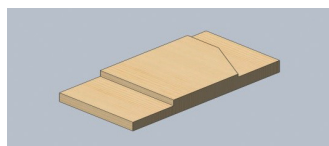


Cutting of holes (blind and thru ones):

- flatwise or endwise, with diameters from 14 mm up to 72 mm
- flatwise, with diameters from 72 mm



Drilling of holes (blind and thru) with max. diameter of 14 mm



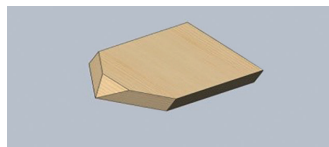
Surface milling



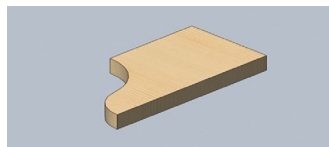
Sawing:
angular ends cutting



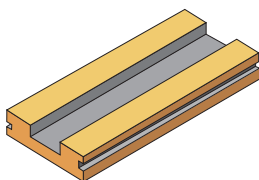
Sawing:
angular ripping along the whole length of the workpiece



Sawing:
angular cuts in various planes



Curves Cutting:
contoured ends



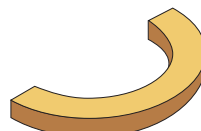
Longitudinal milling along the whole length of the workpiece:

- face milling (min. 40 mm wide and max. 90 mm deep)
- side milling (min. 5 mm wide and max. 150 mm deep)

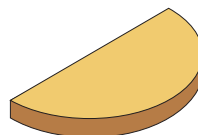
Multi-function bridge OPTIMAT WMS 120 (house building line)

Workpiece	Min (mm)	Max (mm)
Lenght	1000	13300
Thickness	20	63
Width	200	1250

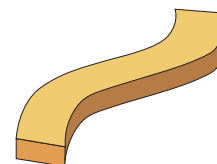
Type of Processing:



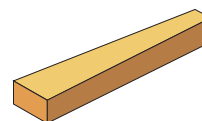
Curved Elements



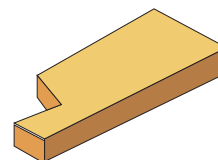
Curved Elements:
single-radius elements



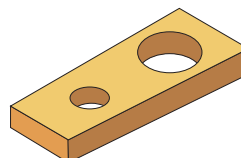
Curved Elements:
double and multi-radius elements



Sawing:
diagonal cuts



Sawing:
complicated, irregular-shaped elements (trapezoidal)



Cutting of large diameter (from 200 mm up to 1000 mm) holes (blind and thru ones), flatwise only.



We successfully supply Ultralam to our customers in Germany, France, Great Britain, Belgium, Norway, Denmark, Sweden, Finland, Estonia, Latvia, Lithuania, Switzerland, the Netherlands, Poland, USA, Japan, Taiwan, Turkey, Australia, UAE, Saudi Arabia, Malaysia, Bahrain, Egypt, South Africa etc.

We would be happy to supply Ultralam to you!

Modern Lumber Technology Ltd. (MLT Ltd.)

Head office
14-A, Bolshaya Morskaya Str.,
191186, Saint-Petersburg, Russia
Phone Int'l Sales +7 812 612 0899
Ph/Fax +7 812 571 6164
E-mail sales@mltlvl.com

www.ultralam.com